

## Installing the CA-Certificates with the Internet Explorer

Certificates are an important security feature for web Browsers. They can be seen as a digital ID card of a server and identify your web server. In addition, and are needed for proper encryption of data transferred.

Meanwhile, the Max Planck Society has a so called certificate authority. This can be compared to a passport office, which can provide and approve digital IDs of servers and people. At the MPI of Economics, we use those certificates to properly identify our web servers. In order to get this to work properly, you must load the certificates into your browser. This must be done just once. Please read below, how it would work. In case of questions or problems, please do not hesitate to ask at the IT department.

Best regards

Thomas Baumann  
Head of IT

You need to install a 'chain of trust'.

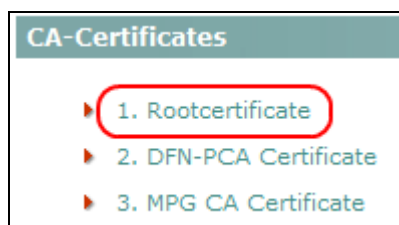
These certificates are used to identify our web-server to ensure the security of your data.

Just follow the steps and click the buttons or links highlighted with the red border.

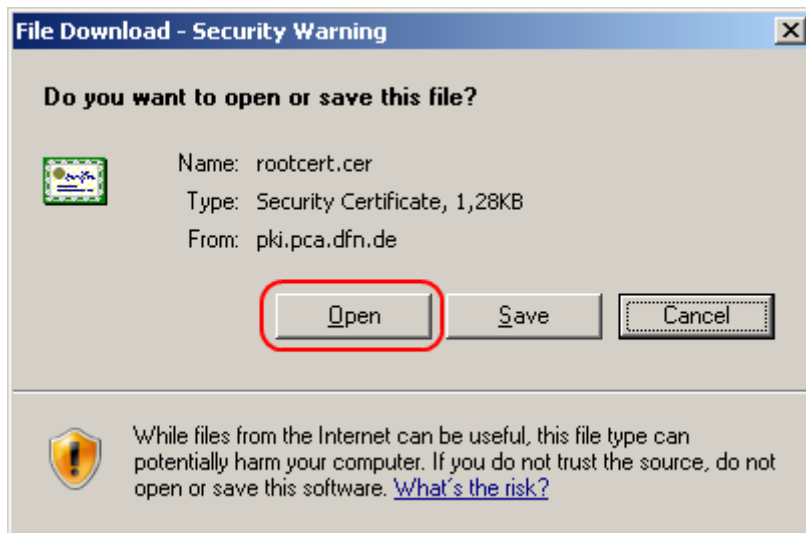
Open the Max Planck Institute of Economics Homepage.



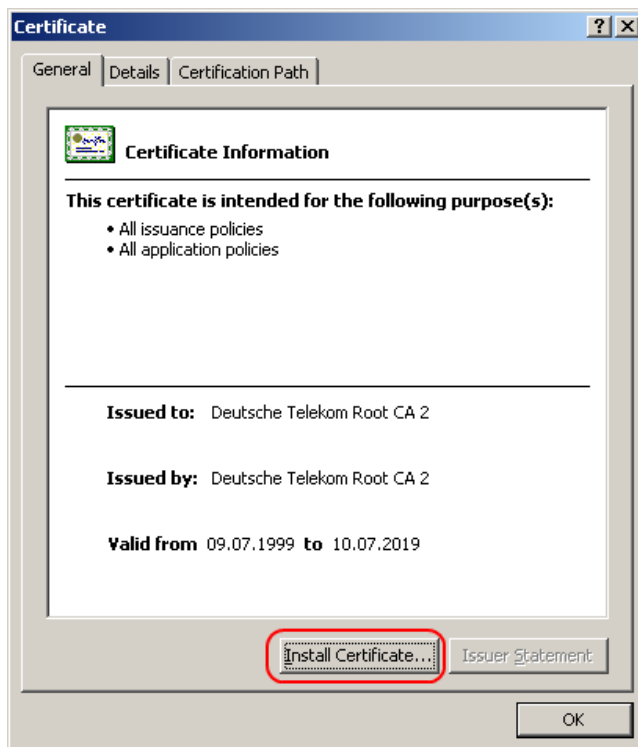
Click on "install certificates"



Choose the "1. Rootcertificate" entry

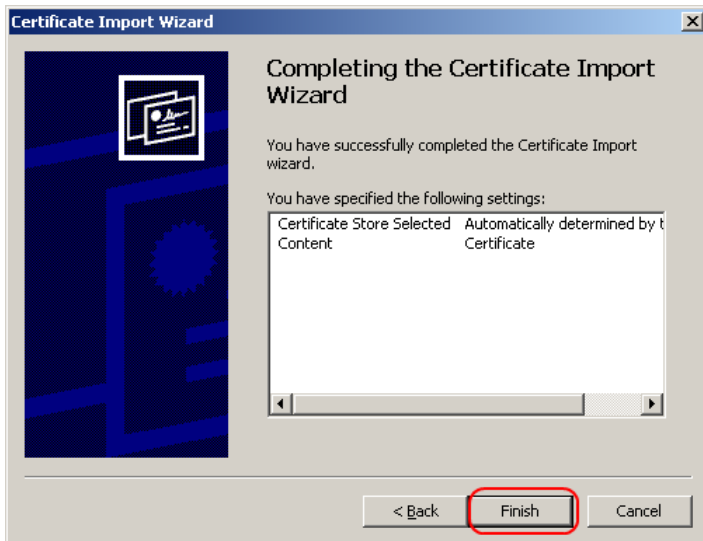
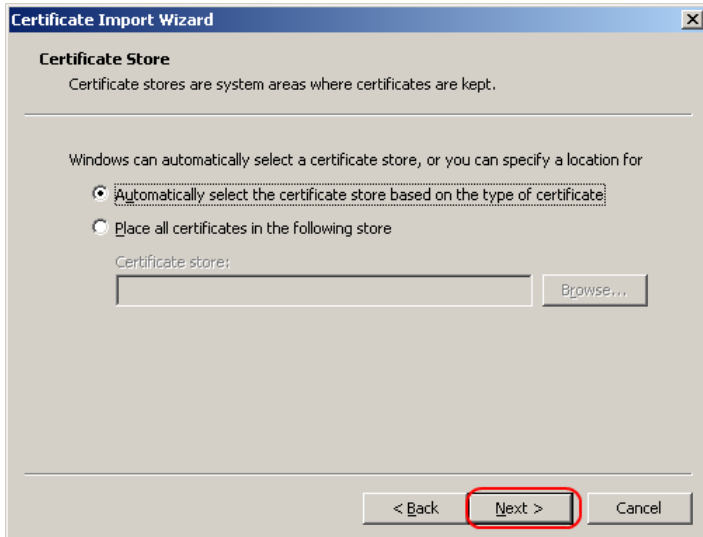
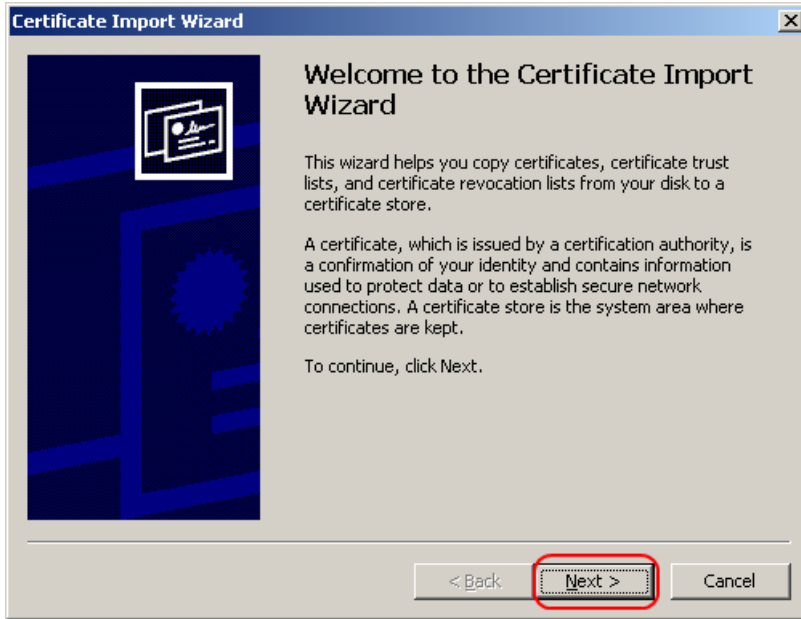


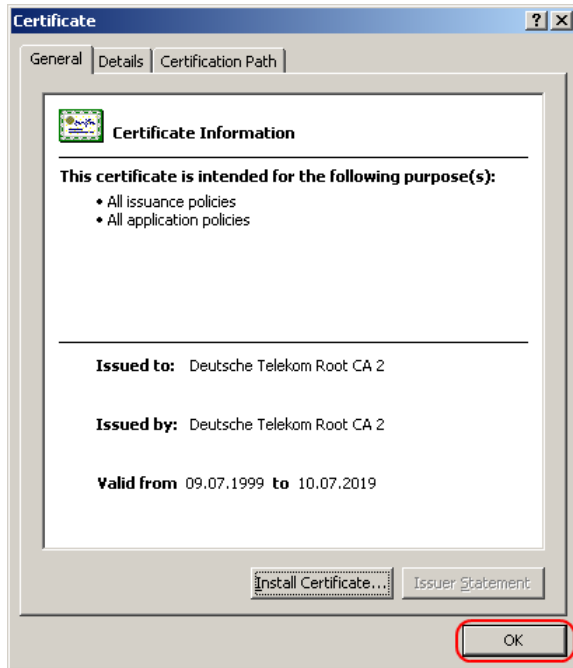
Choose "Open" in the opening dialog-box



Choose "Install Certificate..."

During next steps please confirm the given default values.





Now follow the procedure again for “2. DFN-PCA Certificate” and “3. MPG CA Certificate”

